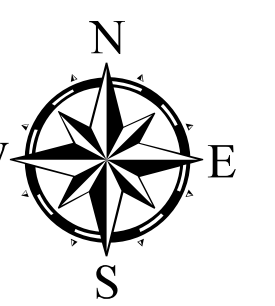
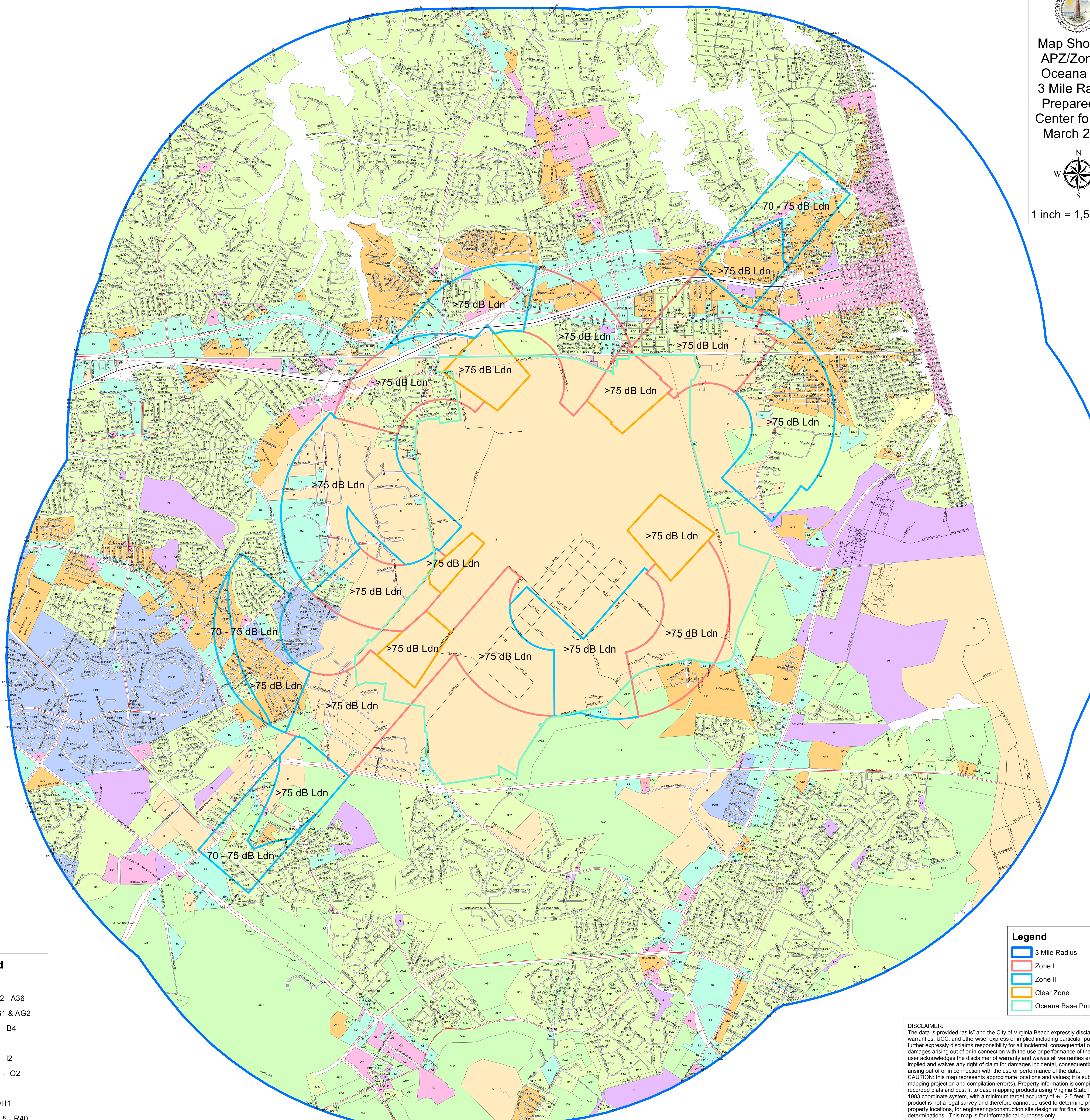




Map Showing
APZ/Zoning
Oceana with
3 Mile Radius
Prepared by
Center for GIS
March 2015



1 inch = 1,500 feet



Legend

Zoning

Orange	A12 - A36
Light Green	AG1 & AG2
Light Blue	B1 - B4
Light Purple	H1
Light Yellow	I1 - I2
Light Pink	O1 - O2
Light Cyan	P1
Light Blue	PDH1
Light Green	R7.5 - R40
Light Yellow	RT1, RT3, RT4

Legend

Blue outline	3 Mile Radius
Red outline	Zone I
Blue outline	Zone II
Orange outline	Clear Zone
Light Green outline	Oceana Base Property Line

DISCLAIMER:
The data is provided "as is" and the City of Virginia Beach expressly disclaims all warranties, UCC, and otherwise, express or implied including particular purpose, and further expressly disclaims responsibility for all incidental, consequential or special damages arising out of or in connection with the use or performance of the data. The user acknowledges the disclaimer of warranty and waives all warranties expressed or implied and waives any right of claim for damages incidental, consequential or special, arising out of or in connection with the use or performance of the data.
CAUTION: this map represents approximate locations and values; it is subject to mapping projection and compilation error(s). Property information is compiled from recorded plats and best fit to base mapping products using Virginia State Plane NAD 1983 coordinate system, with a minimum target accuracy of +/- 2.5 feet. This mapping product is not a legal survey and therefore cannot be used to determine private/public property locations, for engineering/construction site design or for final flood zone determinations. This map is for informational purposes only.

Copyright © 2015 City of Virginia Beach / Center for GIS